

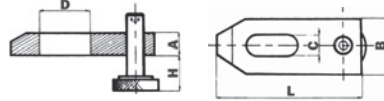
## ELEMENTI DI STAFFAGGIO CLAMPING ELEMENTS

Materiale: acciaio bonificato R=80 ÷ 90 kg/mm<sup>2</sup>  
Esecuzione: verniciata a forno

Material: hardened and tempered steel R=80 ÷ 90 kg/mm<sup>2</sup>  
Heat treated

### STAFFE REGOLABILI / ADJUSTABLE CLAMPS

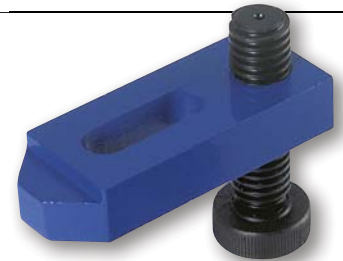
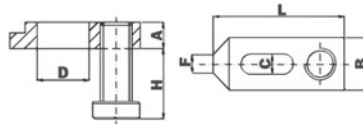
#### ART. 1024



CODE		01	02	03
Altezza / Height	A mm	15	20	25
Base / Base	B mm	30	40	50
Lunghezza / Length	L mm	80	100	125
Altezza regolabile / Adjustable height	H mm	8 ÷ 28	10 ÷ 32	13 ÷ 40
Larghezza cava / Slot width	C mm	11	15	18
Lunghezza cava / Slot length	D mm	30	40	45
Per vite filettatura / For thread		M10	M12-14	M16-18

### STAFFE CON APPOGGIO VITE QUADRA CLAMPS WITH SUPPORT SCREW

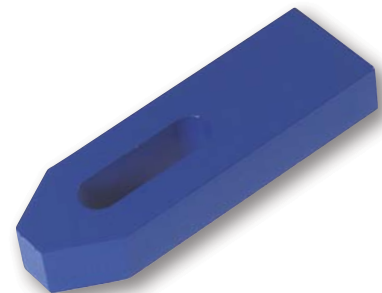
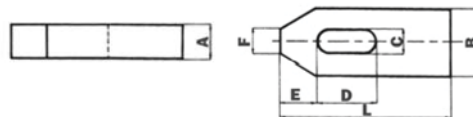
#### ART. 1027



CODE		01	02	03	04	05	06	07	08
Altezza / Height	A mm	20	20	20	25	25	25	30	30
Base / Base	B mm	40	40	40	50	50	50	60	60
Lunghezza / Length	L mm	100	125	160	125	160	200	160	200
Altezza regolabile / Adjustable height	H mm	13÷40	13÷40	13÷40	13÷45	13÷45	13÷45	13÷60	13÷60
Larghezza cava / Slot width	C mm	15	15	15	18	18	18	22	22
Lunghezza cava / Slot length	D mm	40	54	70	54	70	110	60	90
Larghezza punta / Tip width	F mm	14	14	14	18	18	18	22	22
Ø x passo vite / Thread pitch size		M24x4	M24x4	M24x4	M24x4	M24x4	M24x4	M35x5	M35x5
Per vite filettatura / For thread		M12-14	M12-14	M12-14	M16-18	M16-18	M16-18	M20-22	M20-22

### STAFFE SEMPLICI / PLAIN CLAMPS

#### ART. 1041



CODE		01	02	03	04	05	06	07	08	09	10	11	12	13
Altezza / Height	A mm	10	12	15	20	20	25	25	30	30	30	30	40	40
Base / Base	B mm	20	25	30	40	40	50	50	60	60	70	70	80	80
Lunghezza / Length	L mm	50	60	80	100	125	125	160	160	200	200	250	250	315
Larghezza cava / Slot width	C mm	7	9	11	14	14	18	18	22	22	26	26	34	34
Lunghezza cava / Slot length	D mm	20	22	30	40	50	45	65	60	80	80	105	100	130
Distanza cava / Slot distance	E mm	10	13	15	21	21	26	26	30	30	35	35	45	45
Larghezza punta / Tip width	F mm	8	10	12	14	14	18	18	22	22	26	26	34	34
Per vite filettatura / For thread		M6	M8	M10	M12	M14	M16	M18	M20	M22	M24	M24	M30	M30

Precisione secondo: norme DIN 6314 / Accuracy according to DIN 6314

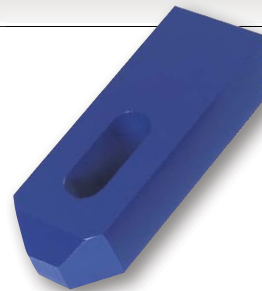
## ELEMENTI DI STAFFAGGIO CLAMPING ELEMENTS

Materiale: acciaio bonificato R=80 ÷ 90 kg/mm<sup>2</sup>  
Esecuzione: verniciata a forno

Material: hardened and tempered steel R=80 ÷ 90 kg/mm<sup>2</sup>  
Heat treated

### STAFFE DENTATE / SERRATED END CLAMPS

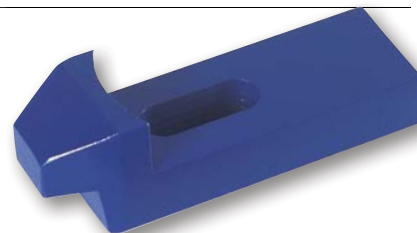
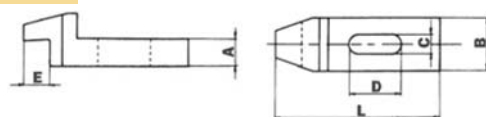
#### ART. 1061



CODE		01	02	03	04	05	06	07
Altezza / Height	A mm	10	12	15	20	25	30	30
Base / Base	B mm	20	25	30	40	50	60	70
Lunghezza / Length	L mm	50	60	80	100	125	160	200
Larghezza cava / Slot width	C mm	7	9	11	14	18	22	26
Lunghezza cava / Slot length	D mm	20	22	30	40	45	60	80
Distanza cava / Slot distance	E mm	10	13	15	21	26	30	35
Larghezza punta / Tip width	F mm	8	10	12	14	18	22	26
Altezza punta / Tip height	G mm	6	7	9	12	15	18	18
Per vite filettatura / For thread		M6	M8	M10	M12-14	M16-18	M20-22	M24

### STAFFE A GOMITO / STEP BLOCKS

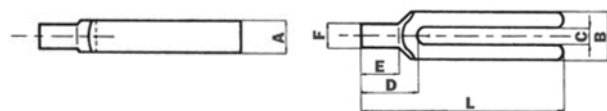
#### ART. 1131



CODE		01	02	03	04	05	06	07
Altezza / Height	A mm	20	25	25	25	30	30	30
Base / Base	B mm	40	50	50	50	60	60	70
Lunghezza / Length	L mm	125	160	160	160	200	200	250
Larghezza cava / Slot width	C mm	14	16	18	22	22	26	26
Lunghezza cava / Slot length	D mm	40	60	60	60	90	90	120
Larghezza punta / Tip width	E mm	25	30	30	30	35	35	35
Per vite filettatura / For thread		M12	M14	M16	M20	M20	M24	M24

### STAFFE A FORCELLA GAMBO CILINDRICO FORKED CLAMPS WITH PIN END

#### ART. 1091



CODE		01	02	03	04	05	06	07	08	09	10	11	12
Altezza / Height	A mm	15	20	25	25	30	30	40	40	40	40	50	50
Base / Base	B mm	30	30	40	40	50	50	60	60	70	70	80	80
Lunghezza / Length	L mm	100	125	160	200	200	250	250	315	250	315	315	400
Larghezza cava / Slot width	C mm	9	11	14	14	18	18	22	22	26	26	34	34
Distanza cava / Slot distance	D mm	30	36	45	45	55	55	70	70	85	85	85	85
Lunghezza gambo / Pin length	E mm	18	24	30	30	36	36	45	45	56	56	56	56
Ø gambo / Pin Ø	F mm	12	16	20	20	24	24	30	30	38	38	45	45
Per vite filettatura / For thread		M8	M10	M12-14	M12-14	M16-18	M16-18	M20-22	M20-22	M24	M24	M30	M30

Precisione secondo norme DIN 6315C / Accuracy according to DIN 6315C

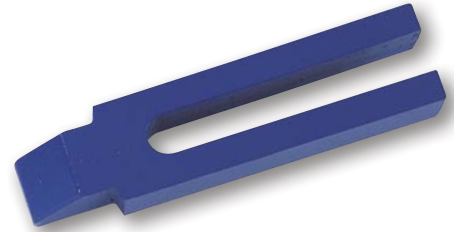
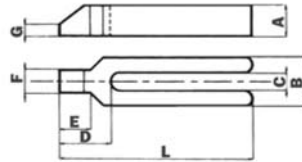
## ELEMENTI DI STAFFAGGIO CLAMPING ELEMENTS

Materiale: acciaio bonificato R=80 ÷ 90 kg/mm<sup>2</sup>  
Esecuzione: verniciata a forno

Material: hardened and tempered steel R=80 ÷ 90 kg/mm<sup>2</sup>  
Heat treated

### STAFFE A FORCELLA CON NASELLO FORKED CLAMPS WITH NARROW NOSE

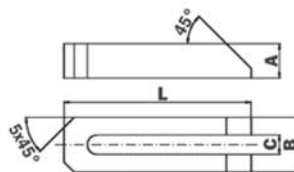
#### ART. 1111



CODE		01	02	03	04	05	06
Altezza / Height	A mm	15	20	25	25	30	30
Base / Base	B mm	30	30	40	40	50	50
Lunghezza / Length	L mm	100	125	160	200	200	250
Larghezza cava / Slot width	C mm	9	11	14	14	18	18
Distanza cava / Slot distance	D mm	32	38	47	47	57	57
Lunghezza nasello / Nose length	E mm	18	24	30	30	36	36
Larghezza nasello / Nose width	F mm	16	20	25	25	28	28
Min altezza nasello / Min. nose height	G mm	5	6	7	7	8	8
Per vite filettatura / For thread		M8	M10	M12-14	M12-14	M16-18	M16-18
CODE		07	08	09	10	11	12
Altezza / Height	A mm	40	40	40	40	50	50
Base / Base	B mm	60	60	70	70	80	80
Lunghezza / Length	L mm	250	315	250	315	315	400
Larghezza cava / Slot width	C mm	22	22	26	26	34	34
Distanza cava / Slot distance	D mm	68	68	83	83	88	88
Lunghezza nasello / Nose length	E mm	45	45	56	56	56	56
Larghezza nasello / Nose width	F mm	40	40	43	43	50	50
Min altezza nasello / Min. nose height	G mm	10	10	10	10	12	12
Per vite filettatura / For thread		M20-22	M20-22	M24	M24	M30	M30

### STAFFE A FORCELLA CON SMUSSO TAPERED FORKED CLAMPS

#### ART. 1141



CODE		01	02	03	04	05	06	07	08	09	10
Altezza / Height	A mm	15	15	20	25	25	25	30	30	40	40
Base / Base	B mm	21	30	31	40	40	40	50	50	50	62
Lunghezza / Length	L mm	60	80	100	125	160	200	160	200	250	200
Larghezza cava / Slot width	C mm	7	9	11	14	14	14	18	18	18	22
Per vite filettatura / For thread		M6	M8	M10	M12-14	M12-14	M12-14	M16-18	M16-18	M16-18	M20-22
CODE		11	12	13	14	15	16	17	18	19	20
Altezza / Height	A mm	40	40	40	40	40	50	50	50	60	60
Base / Base	B mm	62	62	66	66	66	74	74	74	100	100
Lunghezza / Length	L mm	250	300	200	250	315	250	315	400	400	600
Larghezza cava / Slot width	C mm	22	22	26	26	26	34	34	34	40	40
Per vite filettatura / For thread		M20-22	M20-22	M24	M24	M24	M30	M30	M30	M36	M36

Precisione secondo: Norme DIN 6315B / Accuracy according to: DIN 6315B

## ELEMENTI DI STAFFAGGIO CLAMPING ELEMENTS

Materiale: acciaio bonificato R=80 ÷ 90 kg/mm<sup>2</sup>  
Esecuzione: verniciata a forno

Material: hardened and tempered steel R=80 ÷ 90 kg/mm<sup>2</sup>  
Heat treated

### APPOGGI A VITE SUPPORT SCREWS

#### ART. 1031

CODE		01	02	03	04	05	06
Ø testata Head Ø	d mm	34	50	50	65	70	80
Ø corpo Body Ø	D mm	34	50	50	65	80	100
Ø vite Screw Ø	V mm	24	35	35	40	50	65
Altezza Height	min mm	38	50	70	100	140	190
	max mm	50	70	100	140	210	300



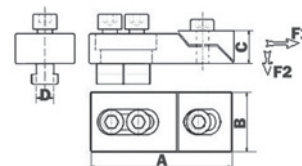
Materiale: acciaio bonificato R=80 ÷ 90 kg/mm<sup>2</sup>  
Esecuzione superficiale: brunitura

Material: hardened and tempered steel R=80 ÷ 90 kg/mm<sup>2</sup>  
Black oxide finish

### MORSETTI PER STAFFAGGIO LATERALE LOW HEIGHT CLAMPING JAWS

#### ART. 1142

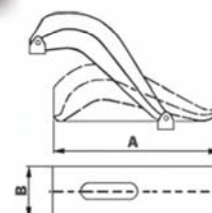
CODE		01	02	03	04	05	06
Lunghezza Length	A mm				115		
Larghezza Width	B mm				50		
Altezza Height	C mm				30		
Larghezza cava Slot width	D mm	10	12	14	16	18	20
Forza applicata Applied force	F1 KN				13,98		
	F2 KN				10,77		



### STAFFE DI SERRAGGIO AD ALTEZZA VARIABILE STEPLESS HEIGHT ADJUSTABLE CLAMPS

#### ART. 1020

CODE		01	02	03
Lunghezza Length	A mm	125	150	200
Larghezza Width	B mm	37	47	57
Per cave For grooves		14-16	18-20	20-22
Per viti For screws		M12	M16	M18



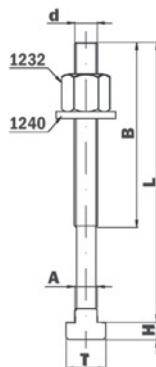
## ELEMENTI DI STAFFAGGIO CLAMPING ELEMENTS

Materiale: acciaio bonificato R=80 ÷ 90 kg/mm<sup>2</sup>  
Esecuzione superficiale: brunitura  
Classe 8.8

Material: hardened and tempered steel R=80 ÷ 90 kg/mm<sup>2</sup>  
Black oxide finish  
Class 8.8

**VITI A TESTA MARTELLO  
COMPLETE DI DADO E RONDELLA  
T-BOLTS WITH NUT AND WASHER**

**ART. 1174**



CODE		04	05	06	07	08	09	10	11	12	13	14
d	M	10	10	10	10	10	10	10	12	12	12	12
L	mm	45	60	80	100	120	140	160	50	60	80	100
B	mm	30	30	35	45	55	45	45	30	35	40	45
A	mm	9,7	9,7	9,7	9,7	9,7	9,7	9,7	11,7	11,7	11,7	11,7
T	mm	17	17	17	17	17	17	17	20	20	20	20
H	mm	6	6	6	6	6	6	6	7	7	7	7
Per cave For grooves		10	10	10	10	10	10	10	12	12	12	12
CODE		15	16	17	18	19	20	21	22	23	24	25
d	M	12	12	12	12	12	14	14	14	14	14	14
L	mm	115	125	145	175	205	60	70	80	100	120	150
B	mm	45	55	55	55	55	35	40	45	45	55	75
A	mm	11,7	11,7	11,7	11,7	11,7	13,7	13,7	13,7	13,7	13,7	13,7
T	mm	20	20	20	20	20	23	23	23	23	23	23
H	mm	7	7	7	7	7	9	9	9	9	9	9
Per cave For grooves		12	12	12	12	12	14	14	14	14	14	14
CODE		26	27	28	29	30	31	32	33	34	35	36
d	M	14	14	14	16	16	16	16	16	16	16	16
L	mm	180	200	240	60	80	100	120	160	180	210	240
B	mm	75	65	80	40	60	45	55	65	75	75	75
A	mm	13,7	13,7	13,7	15,7	15,7	15,7	15,7	15,7	15,7	15,7	15,7
T	mm	23	23	23	25	25	25	25	25	25	25	25
H	mm	9	9	9	10	10	10	10	10	10	10	10
Per cave For grooves		14	14	14	16	16	16	16	16	16	16	16
CODE		37	38	39	40	41	42	43	44	45	46	47
d	M	18	18	18	18	18	18	18	20	20	20	20
L	mm	80	100	120	160	180	210	240	80	100	120	150
B	mm	45	45	55	65	65	65	65	35	55	55	75
A	mm	17,7	17,7	17,7	17,7	17,7	17,7	17,7	19,7	19,7	19,7	19,7
T	mm	30	30	30	30	30	30	30	32	32	32	32
H	mm	10,5	10,5	10,5	10,5	10,5	10,5	10,5	12	12	12	12
Per cave For grooves		18	18	18	18	18	18	18	20	20	20	20
CODE		48	49	50	51	52	53	54	55	56	57	58
d	M	20	20	20	22	22	22	22	24	24	24	24
L	mm	180	210	240	130	210	265	315	130	210	265	310
B	mm	70	70	75	80	80	80	80	70	70	80	80
A	mm	19,7	19,7	19,7	21,7	21,7	21,7	21,7	23,7	23,7	23,7	23,7
T	mm	32	32	32	35	35	35	35	40	40	40	40
H	mm	12	12	12	14,5	14,5	14,5	14,5	16	16	16	16
Per cave For grooves		20	20	20	22	22	22	22	24	24	24	24

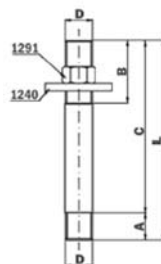
## ELEMENTI DI STAFFAGGIO CLAMPING ELEMENTS

Materiale: acciaio bonificato R=80 ÷ 90 kg/mm<sup>2</sup>  
Esecuzione superficiale: brunitura  
Classe 8.8

Material: hardened and tempered steel R=80 ÷ 90 kg/mm<sup>2</sup>  
Black oxide finish  
Class 8.8

### TIRANTI FILETTATI PER DADI A "T" COMPLETI DI DADO E RONDELLA THREADED BOLTS FOR T-NUTS WITH NUT AND WASHER

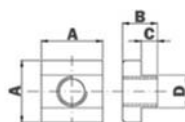
#### ART. 1251



CODE		01	02	03	04	05	06	07	08	09	10	11	12	13
D	M	12	12	12	12	12	12	14	14	14	14	14	14	16
L	mm	75	95	115	135	165	215	65	96	115	135	165	215	85
A	mm	15	15	15	15	15	15	15	15	15	15	15	15	20
B	mm	35	55	60	70	80	100	35	45	70	70	90	90	45
C	mm	60	80	100	120	150	200	50	80	100	120	150	200	65
CODE		14	15	16	17	18	19	20	21	22	23	24	25	26
D	M	16	16	16	16	16	18	18	18	18	18	18	20	20
L	mm	120	140	170	220	245	110	140	170	220	245	270	115	145
A	mm	20	20	20	20	20	20	20	20	20	20	20	28	28
B	mm	60	70	80	90	100	50	70	90	120	100	120	50	70
C	mm	100	120	150	200	225	90	120	150	200	225	250	87	117
CODE		27	28	29	30	31	32	33	34	35	36	37		
D	M	20	20	20	22	22	22	22	24	24	24	24		
L	mm	175	225	275	150	230	280	330	155	235	285	335		
A	mm	28	28	28	30	30	30	30	35	35	35	35		
B	mm	90	115	115	60	70	115	115	80	105	140	105		
C	mm	147	191	247	120	200	210	300	120	200	250	300		

### DADI A "T" PER SCANALATURE DI MACCHINE UTENSILI T-NUTS FOR MACHINE TOOL GROOVES

#### ART. 1310



CODE		01	02	03	04	05	06	07	08	09
Filetto Thread	M	10	12	14	16	18	20	22	24	8
A	mm	18	22	25	28	32	36	40	44	15
B	mm	14	16	18	20	24	28	32	36	12
C	mm	7	8	9	10	12	14	16	18	6
D	mm	11,7	13,7	15,7	17,7	19,7	21,7	23,7	27,7	9,7
Per cava For grooves		12	14	16	18	20	22	24	28	10

## ELEMENTI DI STAFFAGGIO CLAMPING ELEMENTS

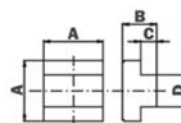
Materiale: acciaio bonificato R=80 ÷ 90 kg/mm<sup>2</sup>  
Esecuzione superficiale: brunitura  
Classe 8.8

Material: hardened and tempered steel R=80 ÷ 90 kg/mm<sup>2</sup>  
Black oxide finish  
Class 8.8

### DADI A "T" NON FORATI, PER SCANALATURE DI MACCHINE UTENSILI T-NUTS BLANKS FOR MACHINE TOOL GROOVES

#### ART. 1311

CODE		01	02	03	04	05
A	mm	15	18	22	25	28
B	mm	12	14	16	18	20
C	mm	6	7	8	9	10
D	mm	9,7	11,7	13,7	15,7	17,7
Per cava / For groove		10	12	14	16	18
CODE		06	07	08	09	
A	mm	32	36	40	44	
B	mm	24	28	32	36	
C	mm	12	14	16	18	
D	mm	19,7	21,7	23,7	27,7	
Per cava / For groove		20	22	24	28	



### DADI A "T" LUNGHEZZA DOPPIA, PER SCANALATURE DI MACCHINE UTENSILI EXTENDED T-NUTS FOR MACHINE TOOL GROOVES

#### ART. 1312

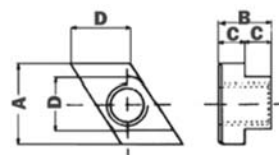
CODE		01	02	03	04	05
Filetto / Thread	M	8	10	12	14	16
A	mm	15	18	22	25	28
B	mm	12	14	16	18	20
C	mm	6	7	8	9	10
D	mm	9,7	11,7	13,7	15,7	17,7
Per cava / For groove		10	12	14	16	18
CODE		06	07	08	09	
Filetto / Thread	M	18	20	22	24	
A	mm	32	36	40	44	
B	mm	24	28	32	36	
C	mm	12	14	16	18	
D	mm	19,7	21,7	23,7	27,7	
Per cava / For groove		20	22	24	28	



### DADI A "T" FORMA ROMBOIDALE, PER SCANALATURE DI MACCHINE UTENSILI RHOMBOIDAL T-NUTS FOR MACHINE TOOL GROOVES

#### ART. 1313

CODE		01	02	03	04	05
Filetto / Thread	M	8	10	12	14	16
A	mm	15	18	22	25	28
B	mm	12	14	16	18	20
C	mm	6	7	8	9	10
D	mm	9,7	11,7	13,7	15,7	17,7
Per cava / For groove		10	12	14	16	18
CODE		06	07	08	09	
Filetto / Thread	M	18	20	22	24	
A	mm	32	36	40	44	
B	mm	24	28	32	36	
C	mm	12	14	16	18	
D	mm	19,7	21,7	23,7	27,7	
Per cava / For groove		20	22	24	28	



## ELEMENTI DI STAFFAGGIO CLAMPING ELEMENTS

Materiale: acciaio bonificato R=80 ÷ 90 kg/mm<sup>2</sup>  
Esecuzione superficiale: brunitura  
Classe 8.8

Material: hardened and tempered steel R=80 ÷ 90 kg/mm<sup>2</sup>  
Black oxide finish  
Class 8.8

### DADI DI MANOVRA CON RONDELLA RHOMBOIDAL T- NUTS FOR MACHINE TOOL GROOVES

#### ART. 1233

CODE		01	02	03	04	05
Filetto / Thread	M	8	10	12	14	16
C	mm	13	17	19	22	24
E	mm	15	19,6	21,9	25,4	27,7
H	mm	12	15	18	21	24
S	mm	3,5	4	4	4,5	5
D	mm	18	22	25	28	31
CODE		06	07	08	09	
Filetto / Thread	M	18	20	22	24	
C	mm	27	30	32	36	
E	mm	31,2	34,6	37	41,5	
H	mm	27	30	33	36	
S	mm	5	6	6	6	
D	mm	34	37	40	45	

Precisione secondo: Norme DIN 6331 / Accuracy according to: DIN 6331

### DADI BASSI / LOW NUTS

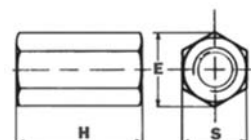
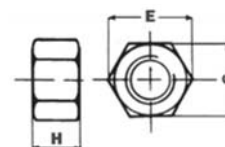
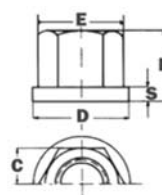
#### ART. 1291

CODE		01	02	03	04
Filetto / Thread	M	12	14	16	18
S	mm	19	22	24	27
E	mm	21,5	25	27,5	31
H	mm	12	14	16	18
CODE		05	06	07	
Filetto / Thread	M	20	22	24	
S	mm	30	32	36	
E	mm	34,5	37	41,5	
H	mm	20	22	24	

### MANICOTTI DI GIUNZIONE / COUPLING NUTS

#### ART. 1301

CODE		01	02	03	04	05
Filetto / Thread	M	12	14	16	18	20
S	mm	19	22	24	27	30
E	mm	21,5	25	27,5	31	34,5
H	mm	30	35	40	45	50
CODE		06	07	08	09	
Filetto / Thread	M	22	24	8	10	
S	mm	32	36	14	17	
E	mm	37	41,5	16	19,5	
H	mm	55	60	22	24	





## ELEMENTI DI STAFFAGGIO CLAMPING ELEMENTS

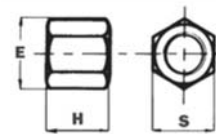
Materiale: acciaio bonificato R=80 ÷ 90 kg/mm<sup>2</sup>  
Esecuzione superficiale: brunitura  
Classe 8.8

Material: hardened and tempered steel R=80 ÷ 90 kg/mm<sup>2</sup>  
Black oxide finish  
Class 8.8

### DADI DI MANOVRA / FIXTURE NUTS

#### ART. 1232

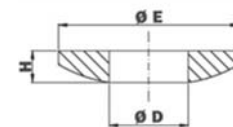
CODE		01	02	03	04	05
Filetto / Thread	M	8	10	12	14	16
S	mm	13	17	19	22	24
E	mm	15	19,6	21,9	25,4	27,7
H	mm	12	15	18	21	24
CODE		06	07	08	09	
Filetto / Thread	M	18	20	22	24	
S	mm	27	30	32	36	
E	mm	31,2	34,6	37	41,5	
H	mm	27	30	32	36	



### RONDELLE FORMA CONVESSA / CONVEX WASHERS

#### ART. 1243

CODE		01	02	03	04
D	mm	10,5	13	15	17
E	mm	21	24	28	30
H	mm	4	4,6	5	5,3
CODE		05	06	07	08
D	mm	19	21	23	25
E	mm	30	36	36	44
H	mm	6,2	6,3	7,5	8,2

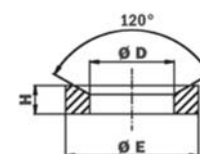


Precisione secondo: Norme DIN 6319C / Accuracy according to: DIN 6319C

### RONDELLE FORMA CONCAVA / CONCAVE WASHERS

#### ART. 1244

CODE		01	02	03	04
D	mm	10,5	13	15	17
E	mm	21	24	28	30
H	mm	4,2	5	5,6	6,2
CODE		05	06	07	08
D	mm	19	21	26	28
E	mm	33	36	40	44
H	mm	6,2	7	8,5	9,5



Precisione secondo: Norme DIN 6319D / Accuracy according to: DIN 6319D

## ELEMENTI DI STAFFAGGIO CLAMPING ELEMENTS

Materiale: acciaio bonificato R=80 ÷ 90 kg/mm<sup>2</sup>  
Esecuzione superficiale: brunitura

Material: hardened and tempered steel R=80 ÷ 90 kg/mm<sup>2</sup>  
Black oxide finish

### RONDELLE ALTE, TORNITE / HIGH WASHERS

#### ART. 1321

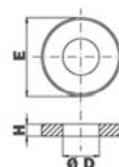
CODE		01	02	03	04	05	06	07
D	mm	13	15	17	19	21	23	25
E	mm	40	45	50	50	50	50	55
H	mm	8	10	10	10	12	12	12



### RONDELLE TORNITE / WASHERS

#### ART. 1242

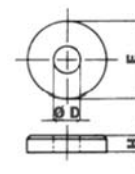
CODE		01	02	03	04	05	06	07
Per vite For Screw	M	10	12	14	16	18	20	8
D	mm	10,5	13	15	17	19	21	8,2
E	mm	25	30	35	40	45	45	25
H	mm	4	5	6	6	7	7	4,5



### RONDELLE AD ALTA RESISTENZA HIGH RESISTANCE WASHERS

#### ART. 1240

CODE		01	02	03	04	05	06	07
D	mm	13	15	17	19	21	23	25
E	mm	24	28	30	34	36	40	44
H	mm	3	4	4	4	4	4	4



Materiale: acciaio bonificato R=80 ÷ 90 kg/mm<sup>2</sup>  
Esecuzione superficiale: brunitura  
Classe 8.8

Material: hardened and tempered steel R=80 ÷ 90 kg/mm<sup>2</sup>  
Black oxide finish  
Class 8.8

### VITI PER TORRETTA TORNI / SCREWS FOR LATHE TURRET

#### ART. 1331



CODE	01	02	03	04	05	06	07	08	09
Ø filettatura / Thread Ø	M8	M10	M12	M14	M16	3/8"	7/16"	1/2"	9/16"

## ELEMENTI DI STAFFAGGIO CLAMPING ELEMENTS

**RASTRELLIERE PER SERIE BULLONI CON TESTA MARTELLO  
T-BOLTS AND WASHERS SET**

**ART. 1162**



PER CAVA 10 mm FOR 10 mm SLOTS		
CODE	01	
COMPOSIZIONE / CONTENT		
ART.		Pz/Pcs
1242.01	Rondelle / Washers	14
1174.04	Viti TM / T-bolts	2
1174.05	Viti TM / T-bolts	2
1174.06	Viti TM / T-bolts	2
1174.07	Viti TM / T-bolts	2
1174.08	Viti TM / T-bolts	2
1174.09	Viti TM / T-bolts	2
1174.10	Viti TM / T-bolts	2

PER CAVA 12 mm FOR 12 mm SLOTS		
CODE	02	
COMPOSIZIONE / CONTENT		
ART.		Pz/Pcs
1242.02	Rondelle / Washers	18
1174.11	Viti TM / T-bolts	2
1174.12	Viti TM / T-bolts	2
1174.13	Viti TM / T-bolts	2
1174.14	Viti TM / T-bolts	2
1174.15	Viti TM / T-bolts	2
1174.16	Viti TM / T-bolts	2
1174.17	Viti TM / T-bolts	2
1174.18	Viti TM / T-bolts	2
1174.19	Viti TM / T-bolts	2

PER CAVA 14 mm FOR 14 mm SLOTS		
CODE	03	
COMPOSIZIONE / CONTENT		
ART.		Pz/Pcs
1242.03	Rondelle / Washers	18
1174.20	Viti TM / T-bolts	2
1174.21	Viti TM / T-bolts	2
1174.22	Viti TM / T-bolts	2
1174.23	Viti TM / T-bolts	2
1174.24	Viti TM / T-bolts	2
1174.25	Viti TM / T-bolts	2
1174.26	Viti TM / T-bolts	2
1174.27	Viti TM / T-bolts	2
1174.28	Viti TM / T-bolts	2

PER CAVA 16 mm FOR 16 mm SLOTS		
CODE	04	
COMPOSIZIONE / CONTENT		
ART.		Pz/Pcs
1242.04	Rondelle / Washers	16
1174.29	Viti TM / T-bolts	2
1174.30	Viti TM / T-bolts	2
1174.31	Viti TM / T-bolts	2
1174.32	Viti TM / T-bolts	2
1174.33	Viti TM / T-bolts	2
1174.34	Viti TM / T-bolts	2
1174.35	Viti TM / T-bolts	2
1174.36	Viti TM / T-bolts	2

PER CAVA 18 mm FOR 18 mm SLOTS		
CODE	05	
COMPOSIZIONE / CONTENT		
ART.		Pz/Pcs
1242.05	Rondelle / Washers	14
1174.37	Viti TM / T-bolts	2
1174.38	Viti TM / T-bolts	2
1174.39	Viti TM / T-bolts	2
1174.40	Viti TM / T-bolts	2
1174.41	Viti TM / T-bolts	2
1174.42	Viti TM / T-bolts	2
1174.43	Viti TM / T-bolts	2

PER CAVA 20 mm FOR 20 mm SLOTS		
CODE	06	
COMPOSIZIONE / CONTENT		
ART.		Pz/Pcs
1242.06	Rondelle / Washers	14
1174.44	Viti TM / T-bolts	2
1174.45	Viti TM / T-bolts	2
1174.46	Viti TM / T-bolts	2
1174.47	Viti TM / T-bolts	2
1174.48	Viti TM / T-bolts	2
1174.49	Viti TM / T-bolts	2
1174.50	Viti TM / T-bolts	2

## ELEMENTI DI STAFFAGGIO CLAMPING ELEMENTS

**CASSETTE ASSORTIMENTI ATTREZZI DI FISSAGGIO  
PER MACCHINE UTENSILI  
MACHINIST CLAMP SET IN WOODEN BOX**

**ART. 1169**



PER CAVA 12 mm FOR 12 mm SLOTS		
CODE	01	
COMPOSIZIONE / CONTENT		
ART.	Pz/Pcs	
1021.02	Appoggi / Supports	4
1021.03	Appoggi / Supports	4
1061.04	Staffe / Clamps	4
1041.04	Staffe / Clamps	4
1174.12	Viti TM / T-bolts	2
1174.14	Viti TM / T-bolts	4
1174.16	Viti TM / T-bolts	4
1251.03	Tiranti / Bolts	4
1232.03	Dadi alti / High nuts	6
1301.01	Manicotti Coupling nuts	4
1242.02	Rondelle / Washers	6
1310.01	Dadi a T / T-nuts	4

PER CAVA 14 mm FOR 14 mm SLOTS		
CODE	02	
COMPOSIZIONE / CONTENT		
ART.	Pz/Pcs	
1021.02	Appoggi / Supports	4
1021.03	Appoggi / Supports	4
1061.04	Staffe / Clamps	4
1041.04	Staffe / Clamps	4
1174.20	Viti TM / T-bolts	2
1174.22	Viti TM / T-bolts	4
1174.24	Viti TM / T-bolts	4
1251.09	Tiranti / Bolts	4
1232.04	Dadi alti / High nuts	6
1301.02	Manicotti Coupling nuts	4
1242.03	Rondelle / Washers	6
1310.02	Dadi a T / T-nuts	4

PER CAVA 16 mm FOR 16 mm SLOTS		
CODE	03	
COMPOSIZIONE / CONTENT		
ART.	Pz/Pcs	
1021.02	Appoggi / Supports	4
1021.03	Appoggi / Supports	4
1061.05	Staffe / Clamps	4
1041.06	Staffe / Clamps	4
1174.30	Viti TM / T-bolts	2
1174.32	Viti TM / T-bolts	4
1174.34	Viti TM / T-bolts	4
1251.15	Tiranti / Bolts	4
1232.05	Dadi alti / High nuts	6
1301.03	Manicotti Coupling nuts	4
1242.04	Rondelle / Washers	6
1310.03	Dadi a T / T-nuts	4

Materiale: acciaio R=80 ÷ 90 kg/mm<sup>2</sup>  
Esecuzione superficiale: brunitura

Material: hardened and tempered steel R=80 ÷ 90 kg/mm<sup>2</sup>  
Black oxide finish

**CHIAVI DI SICUREZZA BREVETTATE PER AUTOCENTRANTI  
PATENTED SAFETY WRENCHES FOR  
SELF-CENTRING CHUCKS**

**ART. 1329**

CODE	01	02	03	04	05	06
Quadro Square mm	6	7	8	9	10	11
CODE	07	08	09	10	11	12
Quadro Square mm	12	13	14	15	16	17
CODE	13	14	15	16		
Quadro Square mm	18	19	20	22		



**CHIAVI DI SICUREZZA BREVETTATE PER PIATTAFORME  
PATENTED SAFETY WRENCHES FOR INDEPENDENT CHUCKS**

**ART. 1330**

CODE	01	02	03	04	05	06	07
Quadro Square mm	9	10	11	12	13	14	15
CODE	08	09	10	11	12	13	
Quadro Square mm	16	17	18	19	20	22	



## ELEMENTI DI STAFFAGGIO CLAMPING ELEMENTS

Materiale: acciaio R=80 ÷ 90 kg/mm<sup>2</sup>  
Esecuzione superficiale: brunitura

Material: steel R=80 ÷ 90 kg/mm<sup>2</sup>  
Black oxide finish

### CHIAVI PER TORRETTE TORNI LATHE TOOL POST WRENCHES

#### ART. 1332

CODE		01	02	03	04
Quadro / Square	mm	10	12	14	16



### CHIAVI PER MANDRINI AUTOCENTRANTI TORNI SELF-CENTRING LATHE CHUCK WRENCHES

#### ART. 1334

CODE		01	02	03	04	05
Quadro / Square	mm	10	12	13	14	15



### CHIAVI PER PIATTAFORME TORNI LATHE INDEPENDENT CHUCKS WRENCHES

#### ART. 1335

CODE		01	02	03	04	05	06
Quadro / Square	mm	8	9	10	11	12	13

CODE		07	08	09	10	11
Quadro / Square	mm	14	15	16	17	18



### CHIAVI A PIPA / SOCKET WRENCHES

#### ART. 1336

CODE		01	02	03	04
Esagono / Hexagon	mm	12	14	17	19



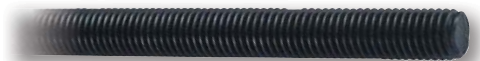
### BARRE FILETTATE RULLATE IN ACCIAIO 8.8 8.8 STEEL ROLLING THREADED BARS

#### ART. 1253

Lunghezza 1 m, campo di tolleranza filettatura 7g      Length 1 m, thread tolerance class 7g

CODE		01	02	03	04	05	06
Filetto / Thread	M	6	8	10	12	14	16

CODE		07	08	09	10	11	12
Filetto / Thread	M	18	20	22	24	27	30



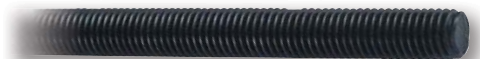
### BARRE FILETTATE RULLATE IN ACCIAIO 10.9 10.9 STEEL ROLLING THREADED BARS

#### ART. 1254

Lunghezza 1 m, campo di tolleranza filettatura 7g      Length 1 m, thread tolerance class 7g

CODE		01	02	03	04	05	06
Filetto / Thread	M	6	8	10	12	14	16

CODE		07	08	09	10	11	12
Filetto / Thread	M	18	20	22	24	27	30



## ELEMENTI DI STAFFAGGIO CLAMPING ELEMENTS

### BARRE FILETTATE RULLATE IN ACCIAIO INOX AMAGNETICO AISI 304-A2 NON-MAGNETIC AISI 304-A2 STAINLESS STEEL ROLLING THREADED BARS

#### ART. 1200

Lunghezza 1 m, campo di tolleranza filettatura 6g Length 1 m, thread tolerance class 6g



CODE	01	02	03	04	05	06	07	08
Filetto / Thread M	3	4	5	6	8	10	12	14
CODE	09	10	11	12	13	14	15	
Filetto / Thread M	16	18	20	22	24	27	30	

### BARRE FILETTATE RULLATE IN ACCIAIO INOX AMAGNETICO AISI 316-A4 NON-MAGNETIC AISI 316-A4 STAINLESS STEEL ROLLING THREADED BARS

#### ART. 1300

Lunghezza 1 m, campo di tolleranza filettatura 6g Length 1 m, thread tolerance class 6g

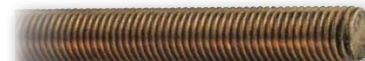


CODE	01	02	03	04	05	06	07	
Filetto / Thread M	4	5	6	8	10	12	14	
CODE	08	09	10	11	12	13	14	
Filetto / Thread M	16	18	20	22	24	27	30	

### BARRE FILETTATE RULLATE IN OTTONE / BRASS ROLLING THREADED BARS

#### ART. 1400

Lunghezza 1 m, campo di tolleranza filettatura 7g Length 1 m, thread tolerance class 7g



CODE	01	02	03	04	05	06	07	
Filetto / Thread M	3	4	5	6	8	10	12	
CODE	08	09	10	11	12	13		
Filetto / Thread M	14	16	18	20	22	24		

### BARRE FILETTATE RULLATE IN FERRO 6S 6S IRON ROLLING THREADED BARS

#### ART. 1110

Lunghezza 1 m, campo di tolleranza filettatura 7g Length 1 m, thread tolerance class 7g



CODE	01	02	03	04	05	06	07	08
Filetto / Thread M	3	4	5	6	8	10	12	14
CODE	09	10	11	12	13	14	15	
Filetto / Thread M	16	18	20	22	24	27	30	

### BARRE FILETTATE RULLATE IN FERRO ZINCATO ELETTROLITICAMENTE GALVANIZED IRON ROLLING THREADED BARS

#### ART. 1100

Lunghezza 1 m, campo di tolleranza filettatura 7g Length 1 m, thread tolerance class 7g



CODE	01	02	03	04	05	06	07	08
Filetto / Thread M	3	4	5	6	8	10	12	14
CODE	09	10	11	12	13	14	15	
Filetto / Thread M	16	18	20	22	24	27	30	