

RICAMBI PER MODULARI MODULAR VICE SPARE PARTS / COMPONENTELE MENGHINEI MODULAR

ART. COCAR

- ③ Carro mobile SP-MP completo
Mobile jaw SP-MP complete
MPPSPBDBNPPCM SP-MP complet

CODE	Misura Size / XXXXXXXXXX
125SP020	125 SP
150SP020	150 SP
175SP020	175 SP
200SP020	200 SP
250SP020	250 SP

125MP020	125 MP
150MP020	150 MP
175MP020	175 MP
200MP020	200 MP
250MP020	250 MP

ART. COLAR

- ⑤ Lardone
Gib / ~~XXXX~~

CODE	Misura Size / XXXXXXXXXX
125MD070	125
150MD070	150
175MD070	175/200
250MD070	250

ART. COCHI

- ⑥ Chiocciola completa di spina
Screw nut / ~~XXXX~~

CODE	Misura Size / XXXXXXXXXX
125MD020	125
150MD020	150
175MD020	175/200/250

ART. COSPINA

- ⑦ Spina
Pin / Bolt

CODE	Misura Size / Dimensiuni
C08X28	125
C08X35	150
C08X45	175/200/250

ART. COCON

- ⑧ Contrasto
Clamping device / ~~XXXXXXXXXX~~

CODE	Misura Size / XXXXXXXXXX
125MD030	125
150MD030	150
175MD030	175/200
250MD030	250

ART. COVCM

- ⑨ Vite comando completa di guarnizione
Screw spindle / Şurub comandă

CODE	Misura Size / Dimensiuni
125MD010	125
150MD010	150
175MD010	175/200/250

ART. COTUR

- ⑩ Guarnizione
Packing / ~~XXXXXXXXXX~~

CODE	Misura Size / XXXXXXXXXX
125MD315	125
150MD315	150
175MD315	175/200/250

ART. COCRS

- ⑪ Corsoio completo di perno
Locking slide / ~~XXXXXX~~

CODE	Misura Size / XXXXXXXXXX
125MD040	125
150MD040	150
175MD040	175/200
250MD040	250

ART. COPRC

- ⑫ Perno corsoio
Locking slide pin / ~~XXXXXXXXXX~~

CODE	Misura Size / XXXXXXXXXX
125MD050	125
150MD050	150/175 200/250

ART. COANF

- ⑬ Anello frizione
Thrust washer / ~~XXXXXXXXXX~~

CODE	Misura Size / XXXXXXXXXX
125MD060	125
150MD060	150
175MD060	175/200/250

ART. COSEGERAL

- ⑭ Anello seeger
Seeger ring / ~~XXXXXXXXXX~~

CODE	Misura Size / XXXXXXXXXX
22C	125
25C	150
32C	175/200/250

ART. COSPG

- ⑮ Spina fissa
Fixed pin / ~~XXXXXX~~

CODE	Misura Size / XXXXXXXXXX
016MD010	125/150 175/200/250

ART. COTAS

- ⑯ Tasselli cava
Slot nuts / ~~XXXXXXXXXX~~

CODE	Misura Size / XXXXXXXXXX mm
012MD020	12
014MD020	14
016MD020	16
018MD020	18
020MD020	20
022MD020	22

ART. COCHIAVE

- ⑰ Chiave a pipa
Wrench / ~~XXXX~~

CODE	Misura Size / XXXXXXXXXX
19PIP	125 (19 mm)
22PIP	150 (22 mm)
27PIP	175/200/250 (27 mm)

ART. COFER

- ⑱ Fermo laterale
Workpiece stop / ~~XXXXXXXXXX~~

CODE	Misura Size / XXXXXXXXXX
125MD080	125
150MD080	150/175 200/250

ART. COTAP

- ⑲ Tappo fori
Hole plug / ~~XXXXXXXXXX~~

CODE	Misura Size / XXXXXXXXXX
150MD250	125/150 175/200/250

ART. COMOL

- Molla per ganascia MP
Spring for MP jaw
~~XXXXXXXXXX~~

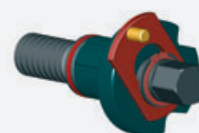


CODE	Misura Size / XXXXXXXXXX
125MP070	125
150MP070	150/175 200/250

ART. COGRUVCMMD

- Gruppo vite (Vite + Contrasto + Corsoio)
Screw set (Screw + Clamping device +
Locking slide)

~~XXXXXXXXXX~~



CODE	Misura Size / XXXXXXXXXX
125	125
150	150
175	175/200
250	250

*I dati sopra riportati non sono impegnativi e a discrezione del costruttore possono essere modificati

*The data above is not binding and can be changed at the discretion of the manufacturer

~~XXXXXXXXXX~~